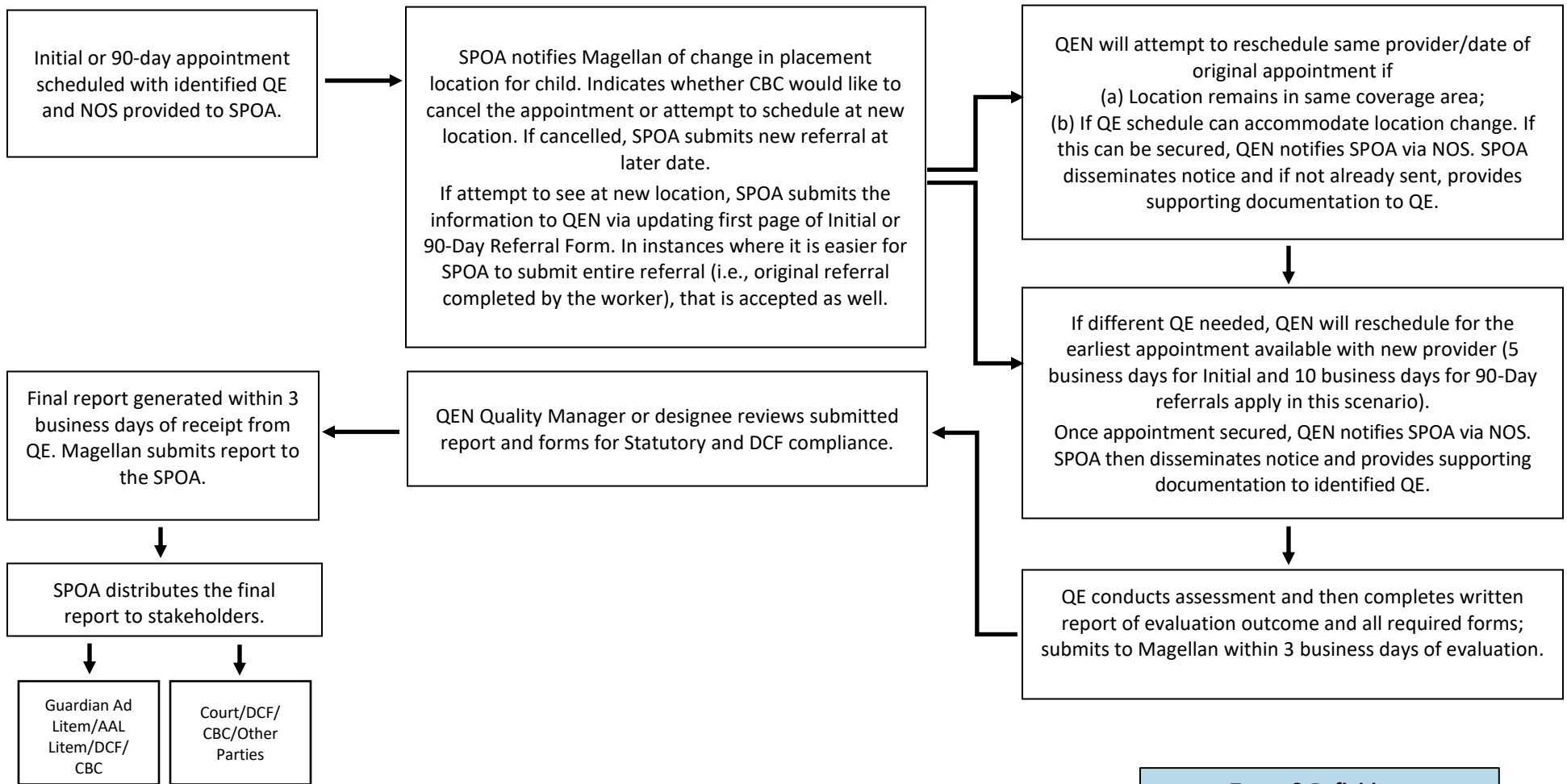


# Suitability Referral Process Outlier (Narrative): Change in Child's Placement Location

Examples: Baker Acts, arrests, foster home to shelter, etc.



**Terms & Definitions**

- CBC** – Community Based Care
- DCF** – Department of Children & Families
- NOS** – Notice of Suitability
- SPOA** – Single Point of Access
- QE** – Qualified Evaluator
- QEN** – Qualified Evaluator Network